

# Utilitarian Restroom Design

Expressions of Interest and  
Information (RFEI) for  
Prefabricated Comfort Stations



## OBJECTIVES

We want to design and manufacture your municipal restrooms. This document will demonstrate our experience and will explain the process to finding your sanitation solution.



## AT A GLANCE

### EXPERIENCE

- Our team has a history of working in the servicing and manufacturing of restrooms.
- We have designed and built restrooms for other Parks departments and hospitals.

### BENEFITS

- Customizable designs
  - Our manufacturing specialists can build and adjust any design you desire.
- American Made 



## BENEFITS

### Statement of Interest

We look forward to designing and manufacturing your restrooms. Before making an order, we would like your feedback on the type of units and designs you are looking for. We understand your need for an ADA-compliant unit. We have ADA Units that have a single sink and maintenance access. We also can install solar-powered lighting and nursing stations.

We know that different areas may require different sanitary solutions, like a foot wash on the outside of a unit by the beach or a design that deters vandalism and abuse of this public asset. That is why details of a specific project are vital to our design.

We support your commitment to the environment. Our modular unit is better for the environment and is a reusable asset for your municipality. We also utilize low-flow fixtures, LED lighting, solar power, and have expertise with vacuum flushing toilets.

## PRINCIPAL OWNER



"For over 20 years, we've been developing and testing restroom technology.

Our mission is to provide municipalities with cutting-edge products that enable people to stay outside longer. "

### MARK A. SLADE

CEO OF THIRD ROCK SANITATION SOLUTIONS

# SPECIFIC INFORMATIONAL NEEDS

Please let us know if you have any other questions that need to be addressed!



## DESIGN & INSTALLATION

- We are not proposing a specific design at this moment, but I have attached a few technical sheets at the end of this document so you can gain an idea of the typical footprint our units take up.
- Our units feature:
  - Porcelain wall-hung fixtures & mirrors
  - Rubber coin over epoxy steel flooring
  - Ducted ventilation Obscure skylights in radius doors
  - Vandal-resistant pebble finished wall panels
  - Double foil radiant barrier insulation
  - Led 50,000 hr LED lighting with aux. 12-volt inlet/outlet
  - Automatic body sensing lighting and occupancy indicator
  - All metal and composite construction
  - 4 ISO bottom corners
- We can adjust the materials used based on your desire.
- Our units can rest on dirt, gravel, cinder blocks, decking, or a slab depending on your needs.
- There are no special power requirements, but running water is needed. Our units can connect to a sewer, underground storage tank, or septic tank.
- We predominantly design modular skid units that can be transported with a forklift and do not necessarily require a costly crane to install.

## COST & PURCHASING

- We do not have a minimum amount of units to place an order, but ordering multiple will lock in a manufacturing timeline and reduce your overall freight costs from our manufacturing hub in Little Rock, Arkansas.
- We understand our unit's design is the highest quality and lowest cost solution compared to most restroom alternatives. Our units cost between \$60k-90k, but that is dependent on the specific design and materials in use.
- Dependent on the orders we are currently fulfilling, a typical order can be fulfilled within 9 months. Once a design is chosen, we will provide a clear timeline.
- With a cost-centric approach, we would recommend utilizing the materials detailed to you and investing in modular, temporary structures like ours.



**THIRD ROCK**  
**SANITATION SOLUTIONS**

# SPECIFIC INFORMATIONAL NEEDS

Please let us know if you have any other questions that need to be addressed!



3

## LONG-TERM FEASIBILITY

- Our units are built to last generations.
- We have units that have been installed for 2 decades. The most common issues are broken toilet seats and needing for updated fixtures.
- They are easy to repair with off-the-shelf parts.
- These are temporary structures, so they can eventually be moved to a new location.
- The demands and uses of our parks, trails, and communities are changing. Our units allow you to effectively cater to evolving public needs—saving taxpayer dollars; while, providing a needed service. Proper infrastructure gives people the confidence to be outside.

## EXAMPLES & OTHER CONSIDERATIONS

- Our units can be seen in San Francisco, Atlanta, Las Vegas, New Bedford, and more.
- Our units work best in park environments or near youth sports activities.
- We have patents on some of our designs and our skid units do not require a license, but we can make restroom trailers as well.
- We are proactive when logistic issues occur. We ensure that we maintain transparent communication with our customers so that expectations are updated. Timeline changes rarely come up because we do the majority of our manufacturing in-house.
- Please see the end of this document for pictures of our products in the field.



**THIRD ROCK  
SANITATION SOLUTIONS**

# OUR TEAM

4



## MARK SLADE

CEO OF THIRD ROCK SANITATION SOLUTIONS

Mark Slade has decades of experience helping municipalities in the liquid waste business as the former CEO of Comfort Zone Portables. He has revolutionized portable sanitation with new products distributed globally. Now, he is taking that experience and bringing sanitary solutions straight to municipalities.



## CLINT NELSON

CEO OF AMS GLOBAL

Clint Nelson has been working in manufacturing much of his career. AMS Global has been developing restroom trailers and comfort stations for well over three decades. Leading the industry push towards modular design. His restrooms have been utilized by hospitals and parks.

# CLIENT LIST

- Pearl Harbor
- White Sands Missile Range Monument
- Homeland Security
- Oakland University
- DuPont
- Sarasota Veterans Memorial Park
- 3M
- Lauderdale County
- City of Coronado
- City of New Bedford
- City of Las Vegas
- The American Red Cross
- Maui National Parks
- SkyView Atlanta
- St. Louis ARCH
- Stanford Medical Center
- Mississippi Port Authority
- and many others

# CONTACT US



(678) 771 5906



Mark.Slade@TRSSusa.com

TRSSUSA.COM



# Build your Dream Restroom with Us



## Restroom Qualities

- Easy to transport
- Dimensions are customizable
- Long term asset for community
- Vinyl wrap to support public message or blend in with environment
- HVAC optional
- Weatherization available
- Can be connected to a septic system, holding tank, or sewer

# Build your Dream Restroom with Us



Third Rock Sanitation Solutions LLC

6845 Shiloh Rd E D11 Alpharetta, GA 30005

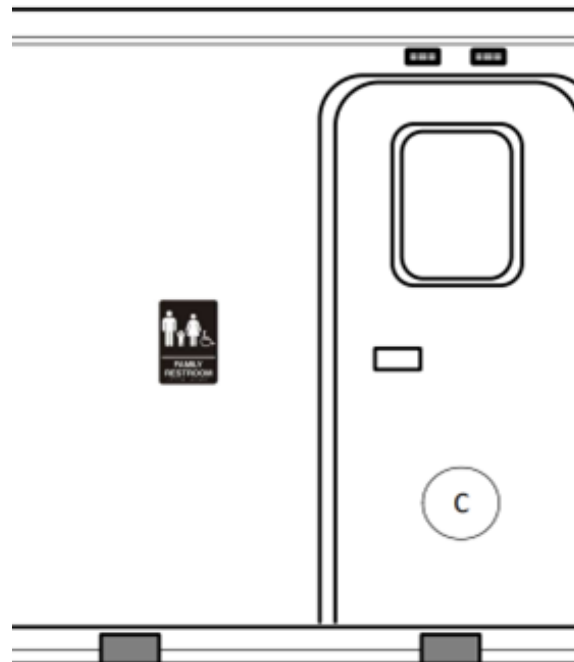
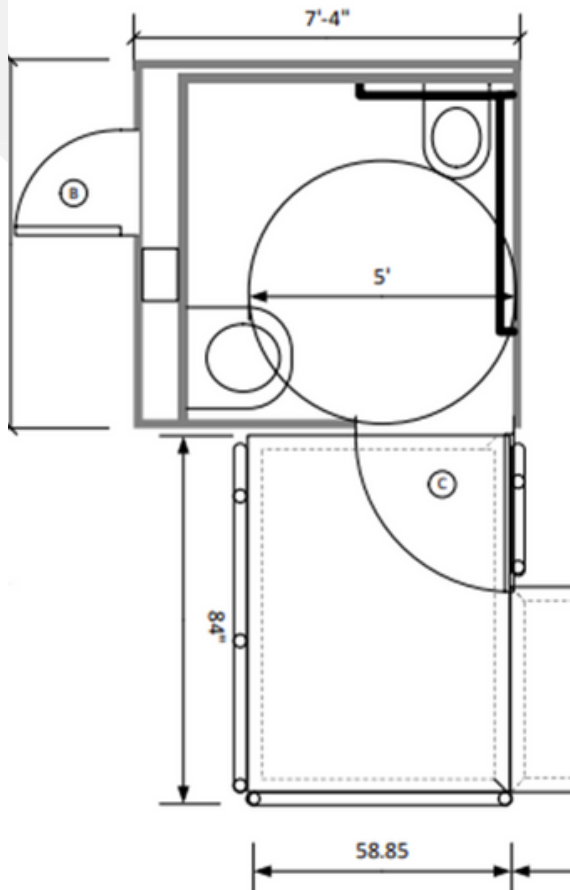
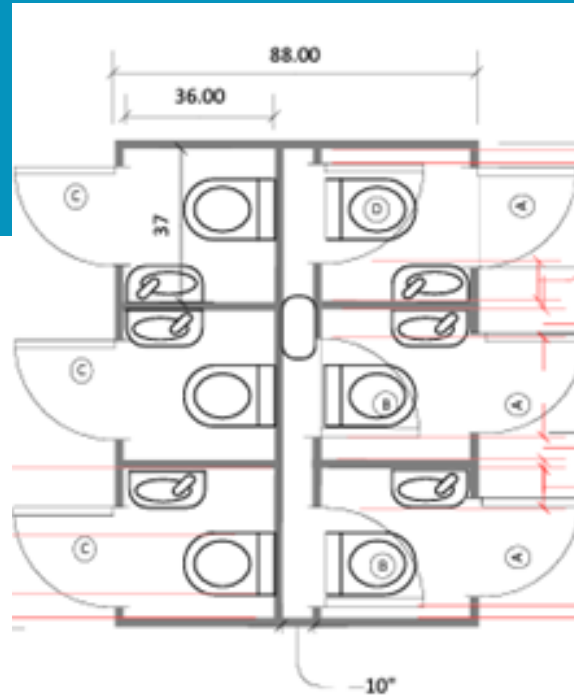
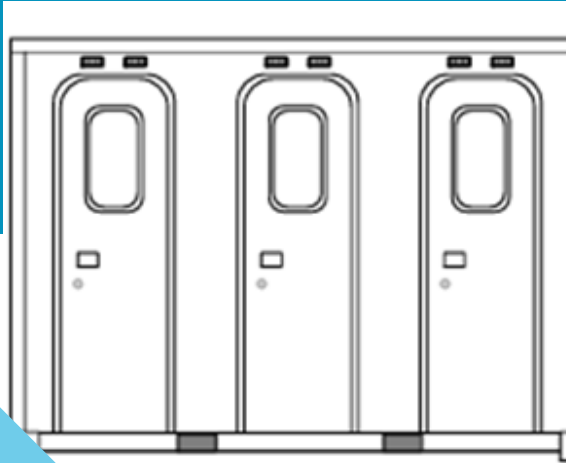


# Build your Dream Restroom with Us

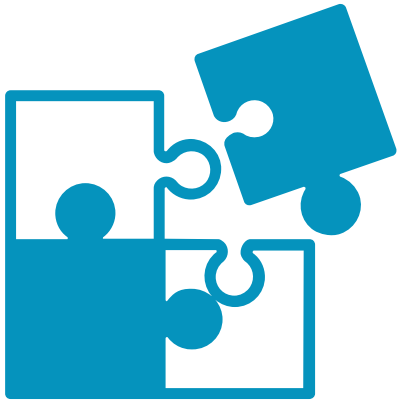




# Build your Dream Restroom with Us



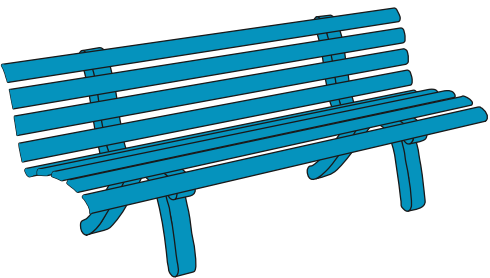
# BENEFITS



- MODULARLY EXPANDABLE
- QUICK TO SETUP
- BETTER FOR THE ENVIRONMENT



- LARGE LIFETIME AND INSTALLATION SAVINGS
- MADE TO BE REPAIRABLE
- LESS ENERGY NEEDS



- FLEXIBLE DEPLOYMENT
- SAVES CONSIDERABLE SPACE
- REDUCED BUILDING & PERMITTING REQUIREMENTS FOR TEMPORARY STRUCTURES



- PROVIDES A BETTER RESTROOM EXPERIENCE
- GIVES PEOPLE THE CONFIDENCE TO EXPLORE FURTHER

## CONTACT US



(678) 771 5906



Mark.Slade@TRSSusa.com

TRSSUSA.COM