

FLEXX FLEXIBILITY IN CREATING AMBIANCE

Presented exclusively by Comfort Zone





FLEXX FLEXIBILITY IN CREATING AMBIANCE

If you want to offer visitors to your event the best experience ever, even when they use your sanitary facilities, look no further than FLEXX, a unique sanitary solution that blends in perfectly with the atmosphere of your event.



FLEXX A UNIQUE CONCEPT WITH MAXIMUM ATMOSPHERE

CREATE YOUR OWN SANITARY EXPERIENCE

You put a lot of effort into choosing the right decor for your event. So, why would you settle for a standard toilet solution? FLEXX gives you the opportunity to reflect the ambiance of your event in your sanitary facilities. Discover a whole new sanitary experience and offer your guests a total package that they'll never forget.

A STYLISH CUSTOMISED SOLUTION FOR EVERY SPACE

FLEXX is a high-quality, versatile product. The system, which consists of removable, reusable walls combined with panels, canvasses and visuals, is the ideal flexible solution for any event. FLEXX is always happy to offer clients a customised product: opt for our stylish standard collection or a customised approach that reflects your particular style or brand. Choose FLEXX and enjoy a unique addition to your stylish experience.

MAXIMUM COMFORT, MAXIMUM FLEXIBILITY

The FLEXX concept consists of three standard modules: FLEXX Toilet, FLEXX Urinal and FLEXX Sink. The modules are easy to link together, in the set-up and numbers of your choice. The robust materials used guarantee users

maximum comfort and reliable quality: whether you want to use the product for a weekend, a week or even months.

A PREMIUM PRODUCT FOR YOUR GUESTS

The FLEXX concept is developed by Comfort Zone Portables exclusively in the USA. Comfort Zone is one of the most innovative suppliers of mobile sanitary solutions. These luxury mobile modules are produced in-house, with a keen eye for detail. The result is a premium product that is the ideal solution for any space in which an optimal experience is key.

LONG, NARROW, WIDE OR WITH ANGLES:
FLEXX ADAPTS TO ANY SPACE.



FLEXX TOILET



Never before has a mobile toilet solution been so revolutionary

Surprise your visitors with sanitary facilities in which great quality and modern design go hand in hand. The FLEXX Toilet base module features premium sanitary products and stylish accessories. The wall finishing creates an exclusive appearance that reflects the experience offered by your event. The ceiling, with its indirect LED lighting, enhances the luxury atmosphere.

FLEXX Toilet is the most sustainable product of its kind on the market today. Thanks to vacuum technology, just 0.8 litres of water is used per flush - reducing water use by 90%. The LED lighting is extremely energy efficient too and the modular system can be used in different settings.

- With any number of modules
- Left and right-opening doors for maximum privacy
- High-tech vacuum technology
- Just 0.8 litres of water per flush
- Available in a disabled-toilet design



FLEXX SINK



A stylish, modern washbasin

The FLEXX Sink is anything but standard. This product is hand-made and stands out because of its modern design. No detail has been forgotten. For example, the taps feature an infrared sensor for hygienic operation and each mirror comes with an integrated soap dispenser and a holder for paper hand towels. The indirect LED panel in the FLEXX Sink module creates a wonderful, atmospheric light.

Although modules are usually installed in groups of two or three, other options are possible too. The same applies for the choice of walls, doors, floors and even taps. The possibilities are almost endless. Your visitors will notice the difference straight away: this space exudes class.

- Stylish washbasin
- Striking design
- Operated via infrared sensor
- A modular system that can be installed anywhere
- An integrated soap dispenser and a dispenser for paper hand towels



FLEXX URINAL



Optimal hygiene combined with maximum privacy

The FLEXX Urinal features the same attractive aesthetic design as our other modules and complements them perfectly. The urinals feature touch-free infrared technology, which means that they flush automatically after every use. The rimless ceramic guarantees optimal hygiene and a long service life, even when used intensively.

The FLEXX Urinal partition runs from the floor to the ceiling - enhancing the exclusive atmosphere and guaranteeing maximum privacy. FLEXX provides a technical service for your event, giving you peace of mind that the system will always work properly.

- Infrared flush activation
- Aesthetic design
- Spacious
- High partition for maximum privacy





FLEXX

A special atmosphere or your own house-style?
The possibilities are endless

FLEXX A CUSTOMISED PRODUCT FOR YOUR EVENT

From sports events to trade fairs, from festivals to corporate events: to ensure an optimal experience for all your guests, FLEXX can be customised entirely in line with your specific needs and requirements. Opt for one of our luxury standard designs or allow us to produce a customised design for you. Use FLEXX products to create a unique sanitary solution, reflecting the look & feel of your brand or event.

FLEXX gives you full flexibility in terms of layout, numbers and furnishing. Luxury is achieved through an eye for detail, something that FLEXX certainly has.



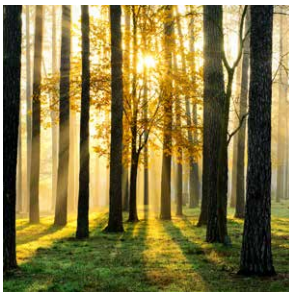
PRINT



PRINT WITH BACKLIT LED

Print or print with backlit LED

A striking visual can be added to the large back or side walls of the sanitary facilities and can be supplied complete with LED lighting if required.



STANDARD



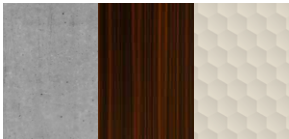
YOUR OWN VISUAL

Standard or your own visual?

A strong visual is a decisive element of any set-up. You can opt for an attractive FLEXX visual or a visual of your own choice.



WALLS FROM STOCK



YOUR OWN DESIGN



Walls in your own design or house-style?

Various beautiful wall finishings are available from stock. If you would prefer to use your own house-style, colours or logo, that's not a problem either.



FROM CARPET



...TO WOOD LAMINATE FLOORING

Any floor is possible

Countless floor options are possible too, from tiles to wood laminate flooring and even carpet. Not just image-enhancing but practical too.



“When we are challenged by our customers, we are at our best.”

No challenge is too big for us and nothing is too much trouble. If you are wondering how FLEXX could make a difference to your event, please allow us to show you. Send us an e-mail to Sales@ComfortZonePortables.com or call us our Toll Free 1-888-556-5587 or call our Business Development, Mark Slade directly at 404-918-3187 or email: MSlade@ComfortZonePortables.com

FLEXX is an exclusive product offered by Comfort Zone in the USA and Canada

